

The image features a white background with abstract geometric shapes. In the top right corner, there are overlapping triangles in grey and orange. In the bottom left corner, there is a single orange triangle. The text 'JLS' is in a large, bold, orange sans-serif font, and 'ANATOMICALS' is in a smaller, bold, grey sans-serif font directly below it.

JLS

ANATOMICALS



CIRUGÍA BARÍATRICA

MANGA GÁSTRICA

s/ 1,578 \$ 418



BYPASS EN Y DE ROUX

s/ 1,578 \$ 418



**BYPASS GÁSTRICO
SADIS**

s/ 1,578

\$ 418



BANDA GÁSTRICA


s/ 1,308

\$ 355





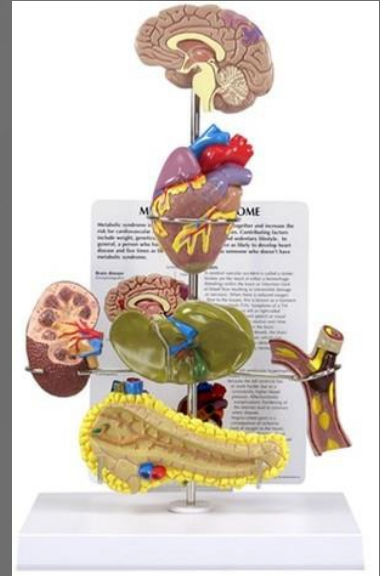
MODELOS DE OBESIDAD Y SÍNDROME METABÓLICO

A solid orange triangle pointing upwards, located at the bottom left of the page.

**SÍNDROME METABÓLICO
MODELO: 4020**

s/ 1,420

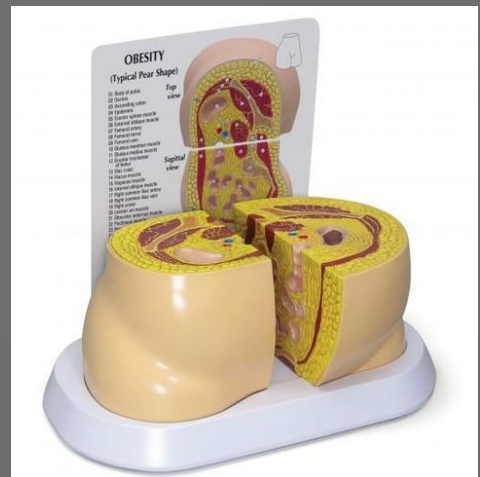
\$ 377



**OBESIDAD
MODELO: 3600**

s/ 1,093.5

\$ 290





MODELOS DIGESTIVOS



**COLON DE 4 PIEZAS CON
PATOLOGÍAS**

s/ 832.00 \$ 222

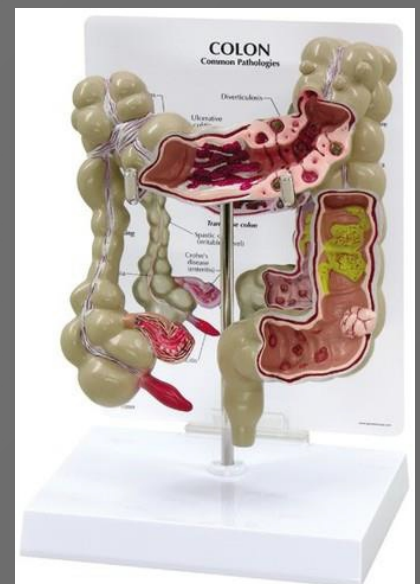
COD: 3341



COLON

s/ 1,131.28 \$ 301

COD: 3340



**ENFERMEDAD POR REFLUJO
GASTRESOFÁSICO (ERGE)**

s/ 867.13

\$ 231

COD: 2010

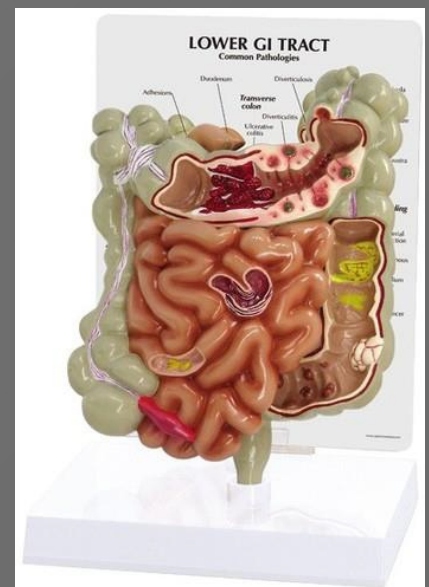


TRACTO GI

s/ 1,191.30

\$ 317

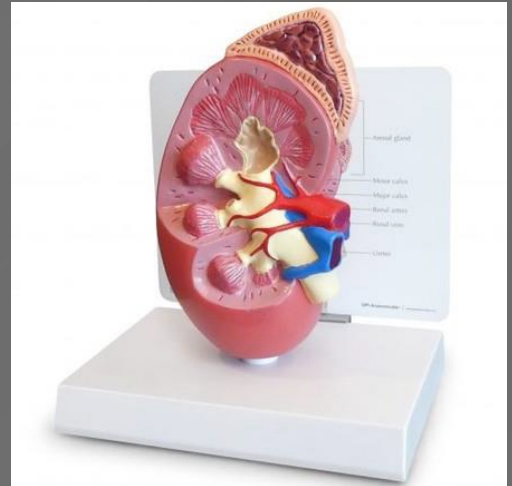
COD: 3342



RIÑÓN NORMAL

s/ 1,015.50 \$ 270

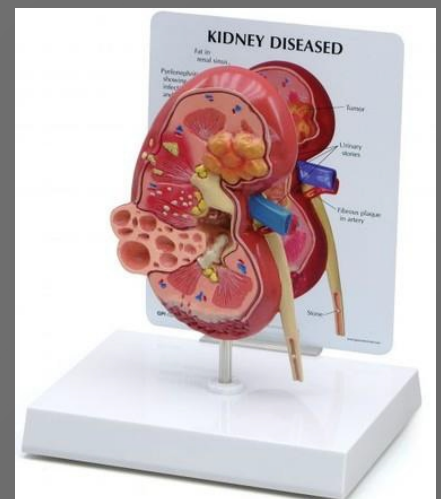
COD: 3250



RIÑÓN NORMAL / PATOLOGÍA

s/ 943.96 \$ 286

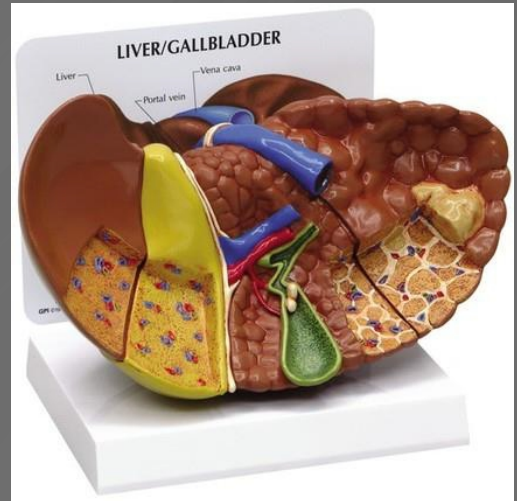
COD:3260



HIGADO CON PATOLOGÍAS

s/ 1,106.47 \$ 294

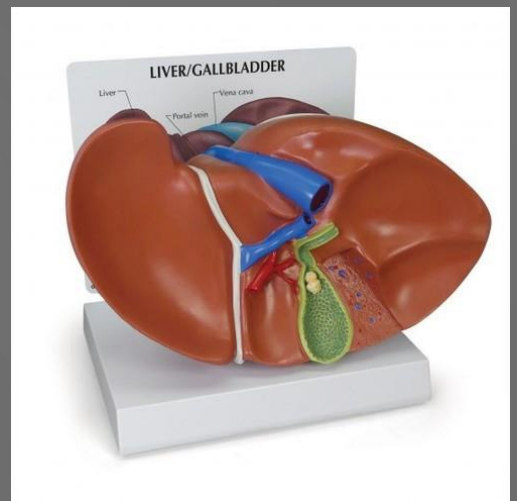
COD: 3310



HIGADO / VESÍCULA BILIAR CON CÁLCULOS BILIARES

s/ 907.20 \$ 242

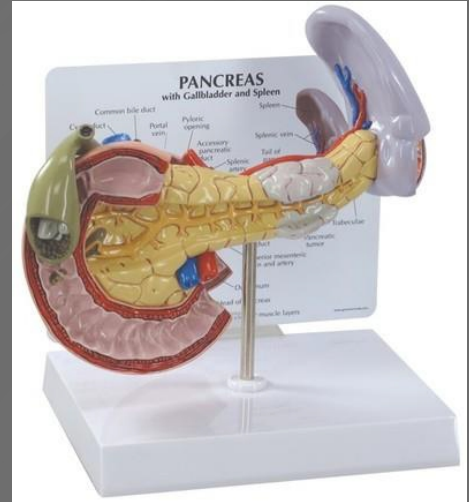
COD:3300



PÁNCREAS

s/ 1,036.25 \$ 276

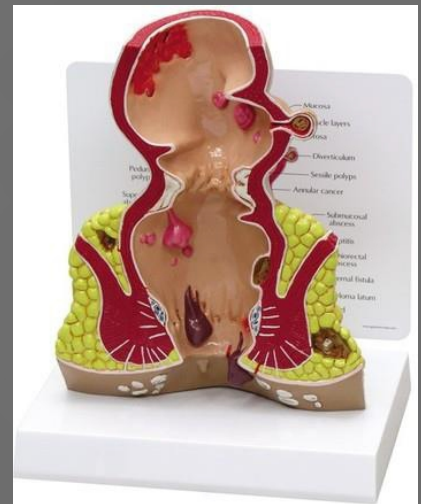
COD: 3330



RECTO

s/ 981.50 \$ 261

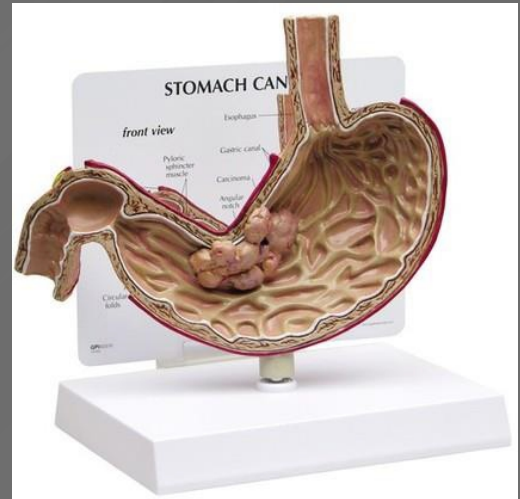
COD:3350



CÁNCER DE ESTÓMAGO

s/ 1.036.04 \$ 276

COD: 2001



ESTÓMAGO CON ÚLCERA

s/ 1.007.65 \$ 268

COD:2000

